

NOTE: Pilots are encouraged to coordinate flights together in groups.
 NOTE: This STAR is for planning purposes only.
 NOTE: MTOW 18,000 lbs. or less at SimVenture.
 NOTE: Altitudes are MOCA only.
 NOTE: VFR or IFR at pilots discretion.

ROUTE DESCRIPTION PART 1

North STAR:

Seattle to Centennial
 (SEA.STAR.OSH7)

Portland to Centennial
 (PDX.STAR.OSH7)

Sun STAR:

North Bend to Centennial
 (OTH.STAR.OSH7)

San Francisco to Centennial
 (SFO.STAR.OSH7)

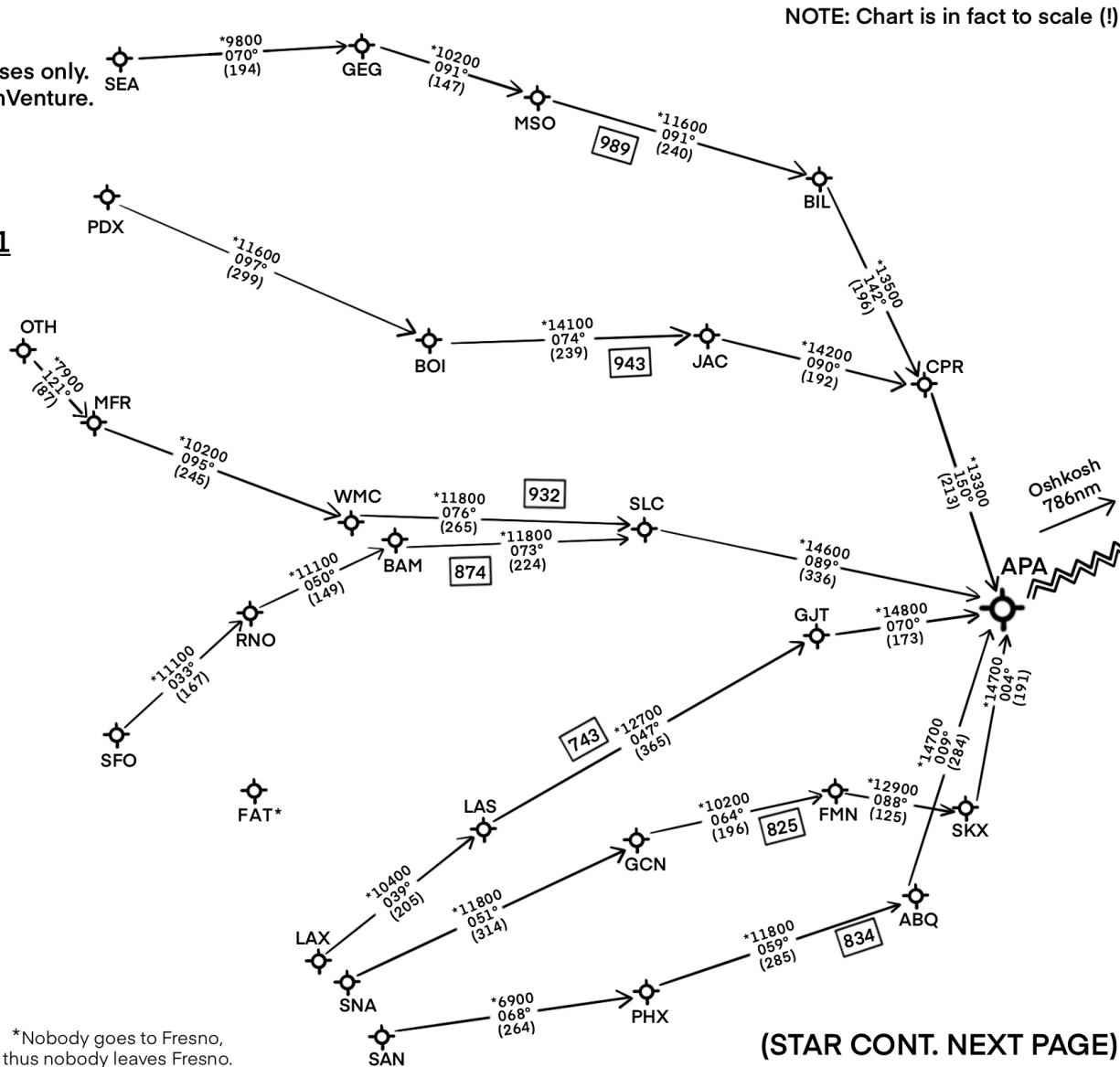
South STAR:

Los Angeles to Centennial
 (LAX.STAR.OSH7)

John Wayne to Centennial
 (SNA.STAR.OSH7)

Lindbergh to Centennial
 (SAN.STAR.OSH7)

ROUTE DESCRIPTION PART 2
 CENTENNIAL TO OSHKOSH
 IS ON FOLLOWING PAGE



(STAR CONT. NEXT PAGE)

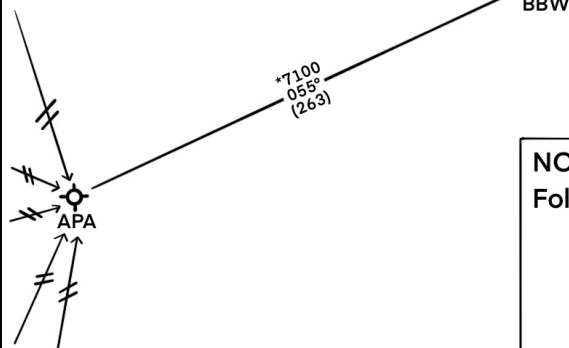
(STAR.OSH7)

0100CT11

SIMVENTURE TAG ALONG ROUTE (XNAV)

OSHKOSH, WISCONSIN
WITTMAN RGNL (OSH)

NOTE: Pilots are encouraged to coordinate flights together in groups.
NOTE: This STAR is for planning purposes only.
NOTE: MTOW 18,000 lbs. or less at SimVenture.
NOTE: Altitudes are MOCA only.
NOTE: VFR or IFR at pilots discretion.



ROUTE DESCRIPTION PART 2

Broken Prop STAR:

Centennial to Oshkosh

(APA.STAR.OSH)

Centennial to Fond du Lac

(APA.STAR.FLD)

NOTE: Charts are in fact to scale (!)

13 JUL 2023 to 16 JUL 2023

Pilots are requested to consider landing first at Fond du Lac to regroup, thus avoiding unprepared entry into Fisk Approach.

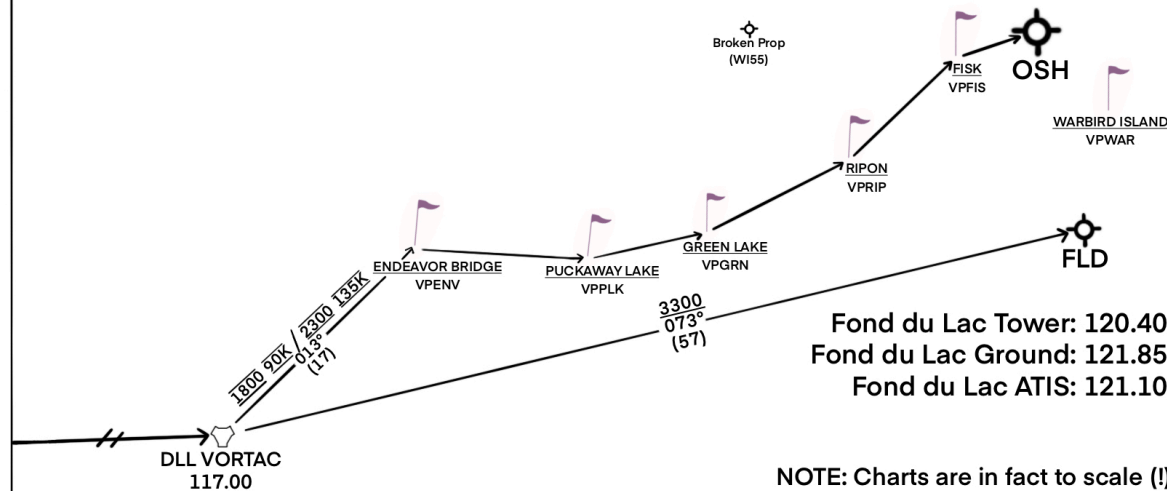
NOTE: Read and follow the NOTICE. (RTFN!)

NOTE: Monitor Oshkosh ATIS (125.90) at least 60nm from KOSH.

NOTE: Monitor Fisk Approach 120.70.

NOTE: Fisk Approach shown for reference only.
Follow the NOTICE!

Oshkosh ATIS: 125.90
Fisk Approach: 120.70
Oshkosh Tower North: 118.50
Oshkosh Tower South: 126.60



Fond du Lac Tower: 120.40
Fond du Lac Ground: 121.85
Fond du Lac ATIS: 121.10

NOTE: Charts are in fact to scale (!)

13 JUL 2023 to 16 JUL 2023

SIMVENTURE TAG ALONG ROUTE (XNAV)

WITTMAN RGNL (OSH)
OSHKOSH, WISCONSIN

(STAR.OSH7)

10111

PE-2023 (EHA)