

NOTE: Chart is in fact to scale (!)

NOTE: Pilots are encouraged to coordinate flights together in groups.  
NOTE: This STAR is for planning purposes only.  
NOTE: MTOW 18.000 lbs. or less at SimVenture.  
NOTE: Altitudes are MOCA only.  
NOTE: VFR or IFR at pilots discretion.

**ROUTE DESCRIPTION PART 1**

**North STAR:**

- Seattle to Centennial (SEA.STAR.OSH7)
- Portland to Centennial (PDX.STAR.OSH7)

**Sun STAR:**

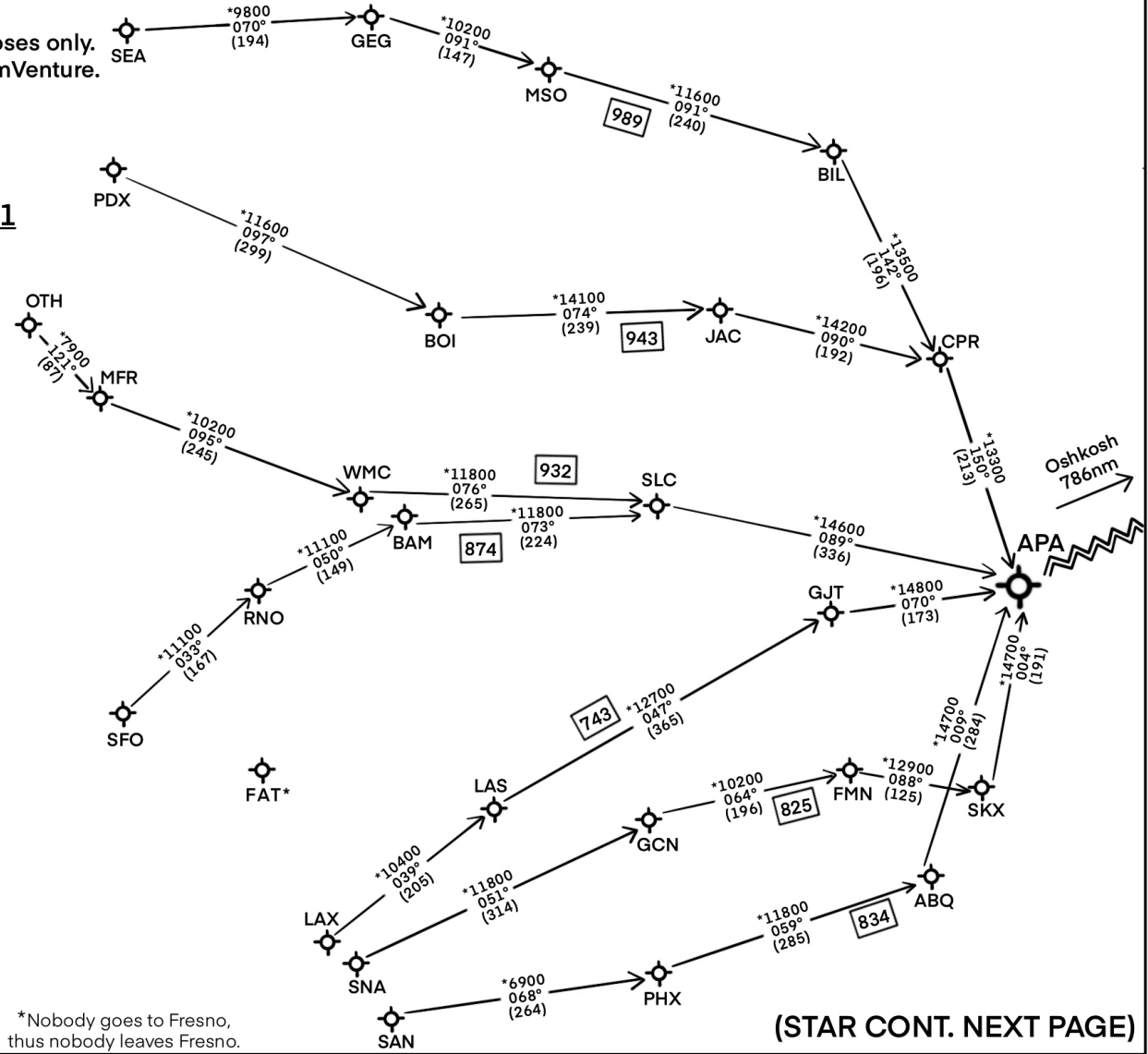
- North Bend to Centennial (OTH.STAR.OSH7)
- San Francisco to Centennial (SFO.STAR.OSH7)

**South STAR:**

- Los Angeles to Centennial (LAX.STAR.OSH7)
- John Wayne to Centennial (SNA.STAR.OSH7)
- Lindbergh to Centennial (SAN.STAR.OSH7)

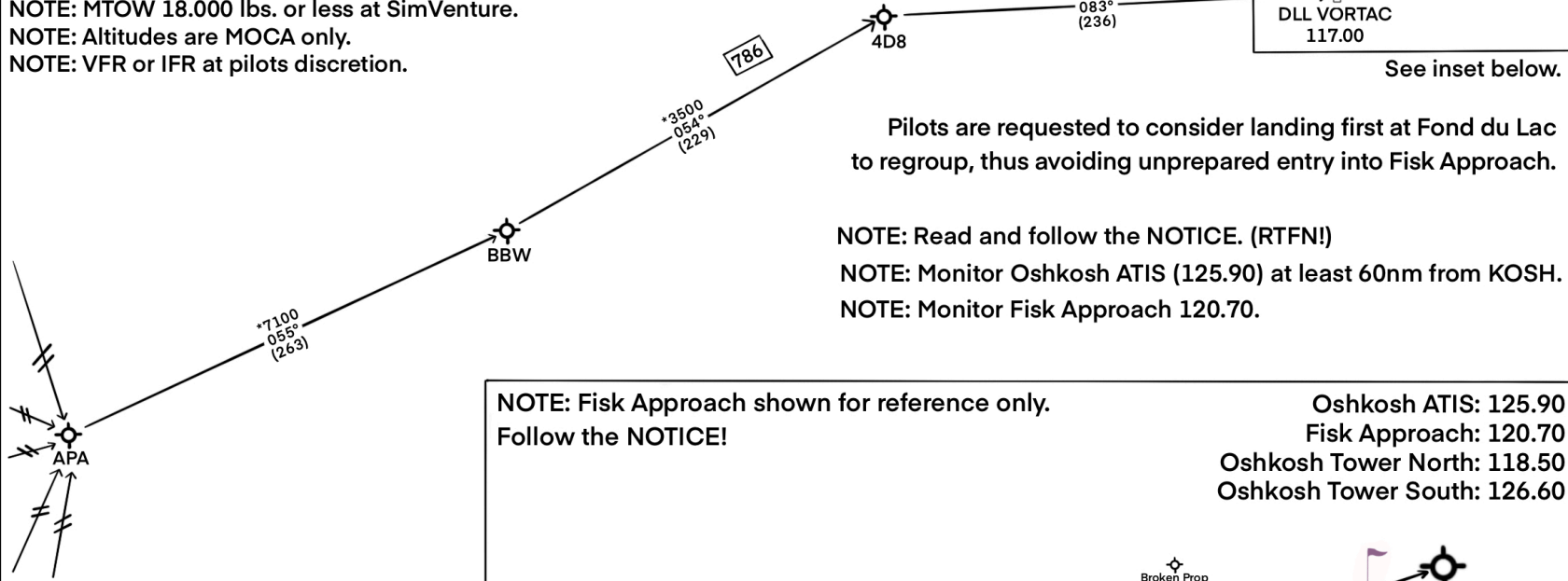
**ROUTE DESCRIPTION PART 2**  
**CENTENNIAL TO OSHKOSH**  
**IS ON FOLLOWING PAGE**

\*Nobody goes to Fresno, thus nobody leaves Fresno.



(STAR CONT. NEXT PAGE)

NOTE: Pilots are encouraged to coordinate flights together in groups.  
 NOTE: This STAR is for planning purposes only.  
 NOTE: MTOW 18.000 lbs. or less at SimVenture.  
 NOTE: Altitudes are MOCA only.  
 NOTE: VFR or IFR at pilots discretion.

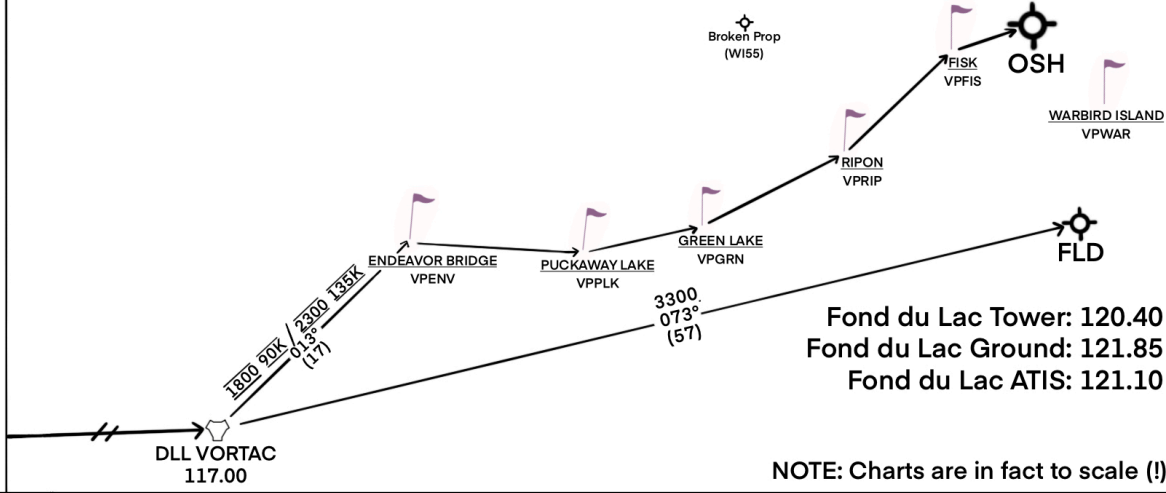


Pilots are requested to consider landing first at Fond du Lac to regroup, thus avoiding unprepared entry into Fisk Approach.

NOTE: Read and follow the NOTICE. (RTFN!)  
 NOTE: Monitor Oshkosh ATIS (125.90) at least 60nm from KOSH.  
 NOTE: Monitor Fisk Approach 120.70.

NOTE: Fisk Approach shown for reference only.  
 Follow the NOTICE!

Oshkosh ATIS: 125.90  
 Fisk Approach: 120.70  
 Oshkosh Tower North: 118.50  
 Oshkosh Tower South: 126.60



Fond du Lac Tower: 120.40  
 Fond du Lac Ground: 121.85  
 Fond du Lac ATIS: 121.10

NOTE: Charts are in fact to scale (!)

**ROUTE DESCRIPTION PART 2**

**Broken Prop STAR:**

Centennial to Oshkosh (APA.STAR.OSH)  
 Centennial to Fond du Lac (APA.STAR.FLD)

NOTE: Charts are in fact to scale (!)